

# 2040 Lauderdale Comprehensive Plan

Steering Committee Mtg #2  
Goals & Strategies

July 12, 2017



PERKINS+WILL

# Agenda

- Introduction Goals & Strategies (7:00 – 7:20)
  - SWOT Summary
  - Goals & Strategies definitions
  - Turning SWOT into Goal Statements
- Individual Worksheet (7:20 – 7:35)
  - Resources in handouts
- Worksheet small group session 1 (7:35 – 8:10)
  - Report summary (8:10 – 8:15)
- Worksheet small group session #2 (8:15 – 8:50)
  - Report summary (8:50 – 9:00)
- Adjourn



# SWOT Summary

- Prioritized results and compiled on handout
- Trends/topic areas appeared – which generally correspond to comprehensive plan topics
  - Community Character
  - Regional Collaboration (Intergovernmental Relationships)
  - Land Use and Redevelopment
  - Housing
  - Connectivity (Transportation, Transit, Bikeways, Walkways)
  - Parks, Open Space & Natural Resources
    - \* *Infrastructure*



# Goals & Strategies

*What is a goal? What is a strategy?*

- GOAL: A **general statement** of a desired objectives indicating **broad** social, economic or physical conditions to which the community official agrees to try to achieve in various ways...
- STRATEGY: An officially adopted **course of action** or position to **implement the community goals**.



# Goals & Strategies

*What do the “action” words mean?*

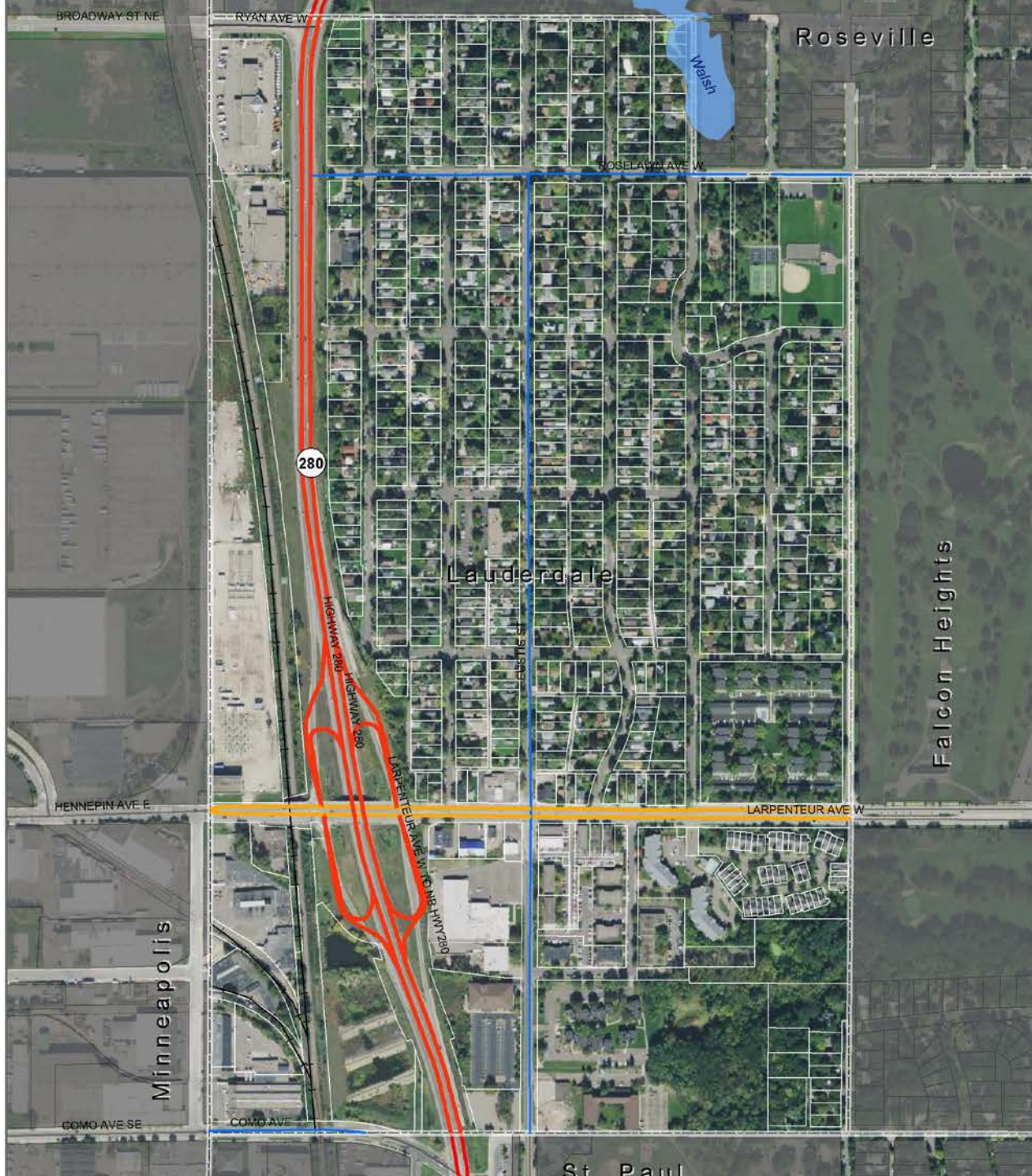
No commitment of financial investment, staff resources and policy directives	May include financial investment, staff resources and policy directives	Commitment to financial investment (if needed), staff resources and policy directives
<p><b>Continue</b></p> <p><b>Endorse</b></p> <p><b>Identify</b></p> <p><b>Reserve</b></p> <p><b>Recognize</b></p> <p><b>Promote</b></p> <p><b>Work</b></p>	<p><b>Create</b></p> <p><b>Encourage</b></p> <p><b>Enhance</b></p> <p><b>Explore</b></p> <p><b>Maintain</b></p>	<p><b>Prevent</b></p> <p><b>Protect</b></p> <p><b>Provide</b></p> <p><b>Strengthen</b></p> <p><b>Support</b></p> <p><b>Sustain</b></p>



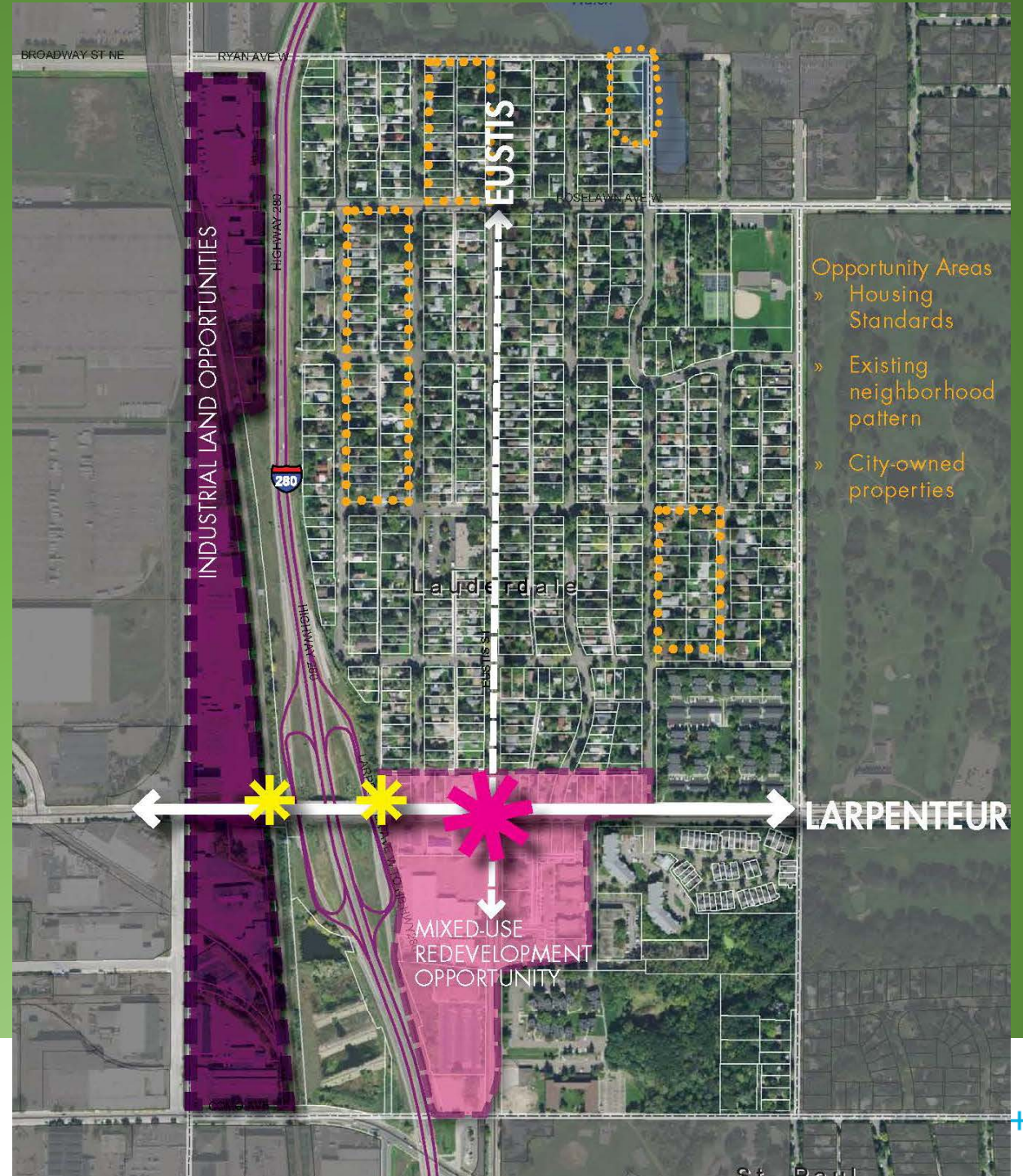
# Goals & Strategies Work Session

- *Review the draft goals, pay special attention to the ACTION words – do they capture what you think?*
- *Brainstorm strategies to support the goal statements, don't worry about word-smithing, focus on the intent, and remember the definition of a strategy.*
- *Use the resource documents to help with development of the strategies, and to identify if a goal statement is missing.*
  - *2030 Goals & Strategies*
  - *Full SWOT result tabulation*





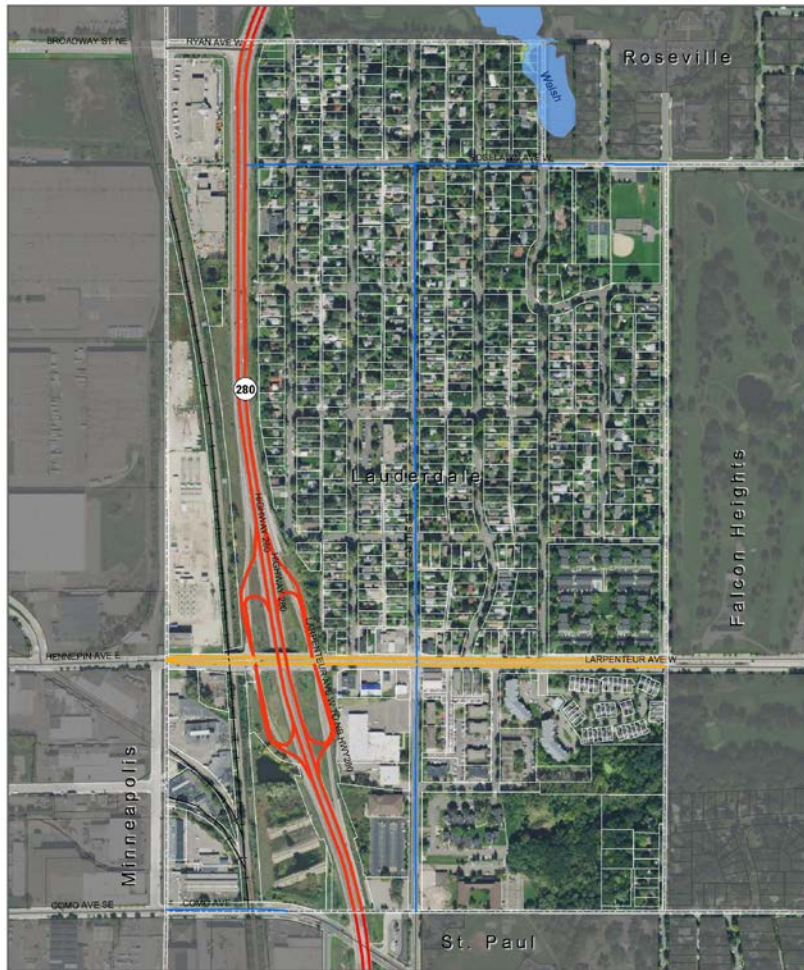
# Redevelopment Opportunities





# Transportation & Infrastructure

Map 6: Functional Classification of Roads



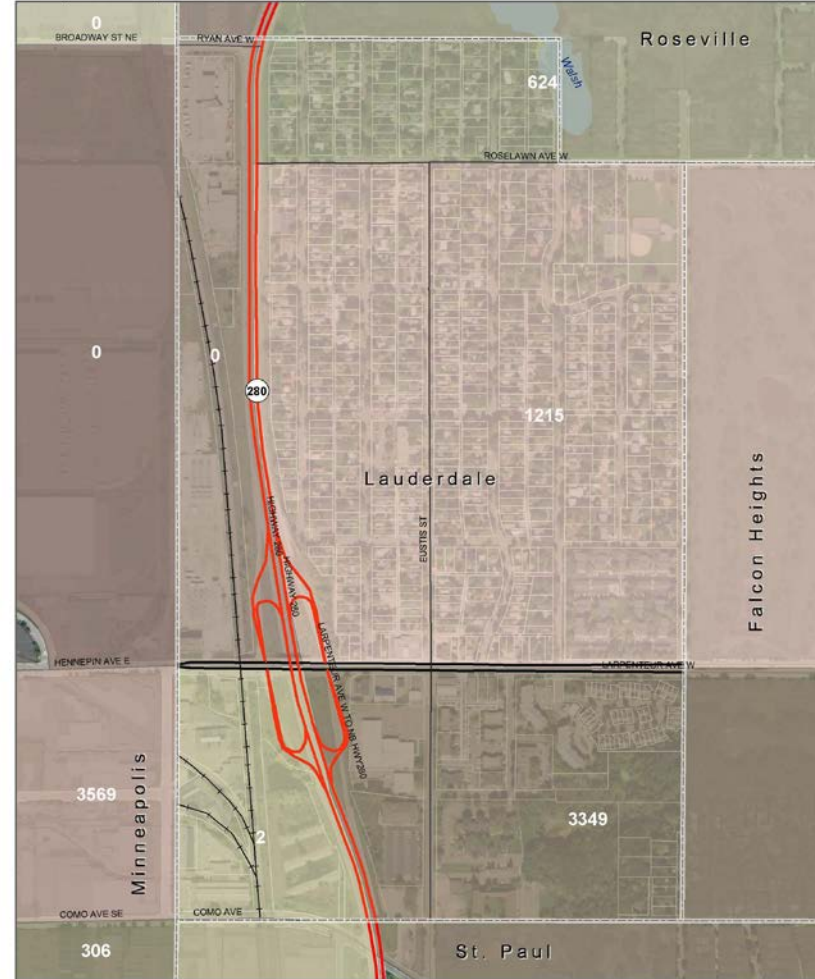
**Road Classification**

- Principal Arterial
- Major Collector
- A Minor Augmentor
- A Minor Reliever



Prepared by: SHC, LLC  
 Draft Date: 5.23.2017  
 Source: Ramsey County Parcel Data,  
 City of Lauderdale, Metropolitan Council

Map 7: Transportation Analysis Zone



2014 Population per TAZ



Prepared by: SHC, LLC  
 Draft Date: 5.23.2017  
 Source: Ramsey County Parcel Data,  
 City of Lauderdale, Metropolitan Council



*Steering Committee Meeting #2*



PERKINS+WILL